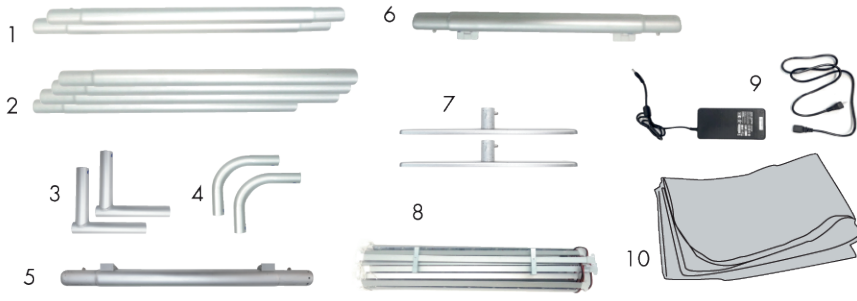


LitFit Wall

Product Parts

- 1 - Side Middle Bars (x2)
- 2 - Top and Bottom Side Bars (x4)
- 3 - Bottom Corners (x2)
- 4 - Top Curved Bars (x2)
- 5 - Middle Bottom w/Springs
- 6 - Middle Top w/Hooks
- 7 - Feet (x2)
- 8 - LED Ladder Light
- 9 - Power Pack and Cord
- 10 - Graphic



Display Set-Up

Step 1

All pieces have push buttons that secure the frame together, with matching numbers to direct assembly.

Connect the Top and Bottom Side Bars (2) to the matching Side Middle Bars (1).

Add the Bottom Corners (3) and the Top Curved Bars (4) to the frame.

Attach the Middle Top w/Connectors (6) to the Curved Bars (4) with the connectors facing downward.

Attach the Middle Bottom w/Springs (5) to the Bottom Corners (3)

Attach the Feet (7) to the Bottom Corners (3).

Step 2

Unroll the LED Ladder Lights (8) and attach them to the clips on the Middle Top w/connectors (6), and do the same on the Middle bottom w/Springs (5).

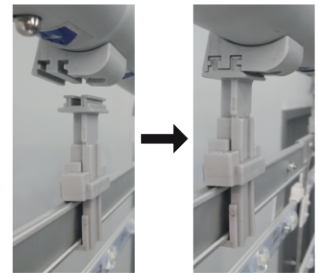
Step 3

Attach the Power Pack (9) to the bottom of the LED Ladder Lights (8). Attach the Cord to the Power Pack (9).

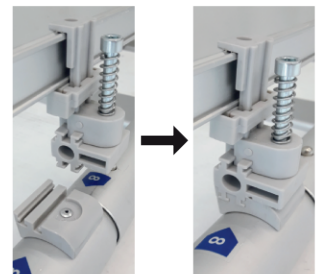
Step 4

Carefully drape the graphic (10) over the frame and pull it down evenly.

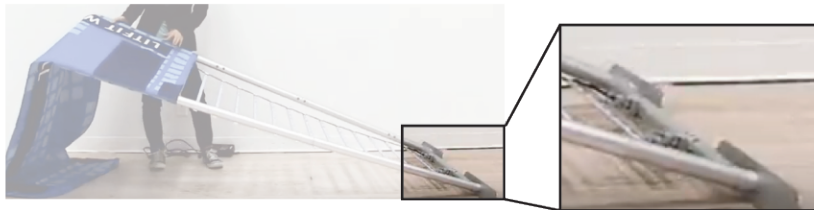
To avoid damaging the hardware, adjust the feet to be parallel with the overall frame before tilting it.



(Top connections)



(Bottom connections)



Plug in the cord to light the display.



Storage

Store in a cool dry location.

Care

Wipe the frame with a damp cloth. Do not wash or dry clean the graphic.